

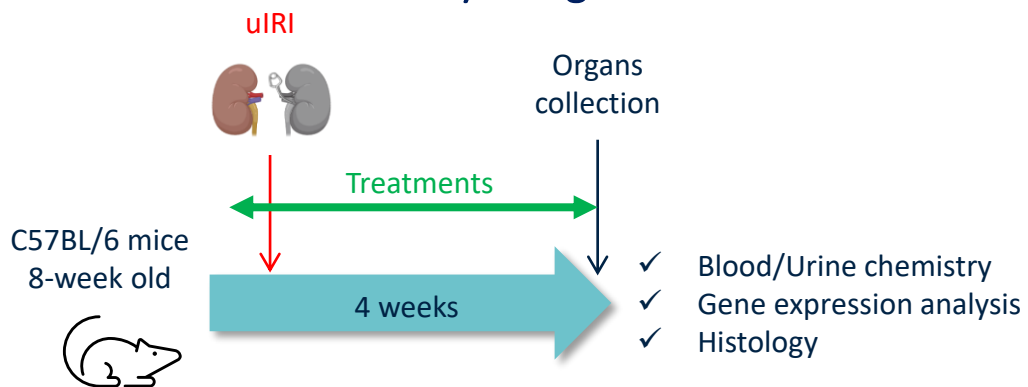
Unilateral Ischemia Reperfusion

Renal ischemia reperfusion (IRI) induces an acute kidney injury associated with a robust inflammatory and oxidative stress response to hypoxia and reperfusion. One key advantage of this surgical model is its relevance to clinical scenarios. By inducing temporary interruption of blood flow, this model mimics the human pathophysiological processes of CKD.

Assay features

- Surgical model on C57Bl6/J male mice
- Gene expression and histological analysis
- Reference: Pirfenidone 300mg/kg
- Clinically relevant for CKD progression

Study design



Assay readouts

