

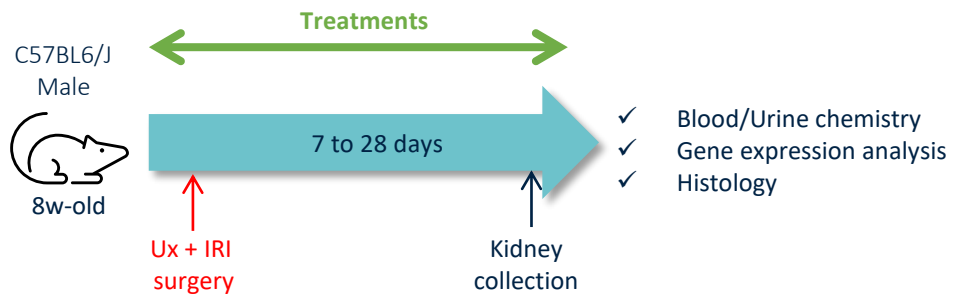
Uni-nephrectomy + Ischemia reperfusion

Renal ischemia reperfusion (IRI) induces an acute kidney injury (AKI) associated with a robust inflammatory and oxidative stress response to hypoxia and reperfusion which disturbs the organ function. To avoid physiological compensation by the contralateral kidney, NEPHRIX Biosolutions propose a mouse IRI model coupled with a contralateral uni-nephrectomy.

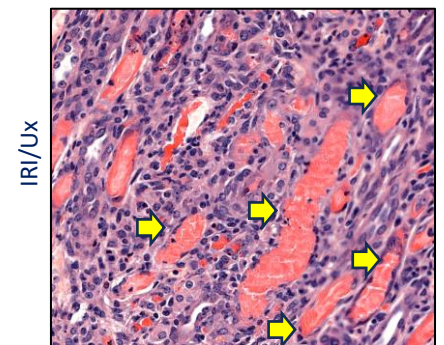
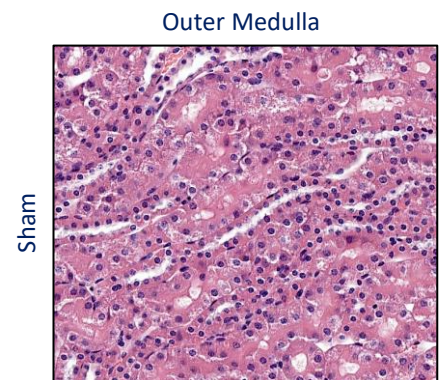
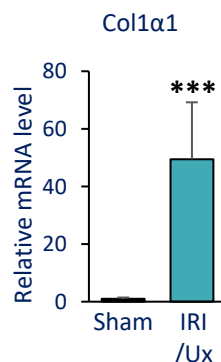
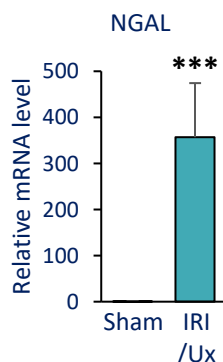
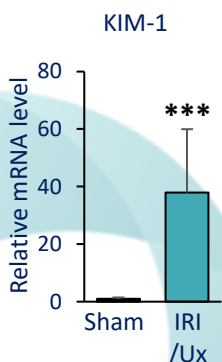
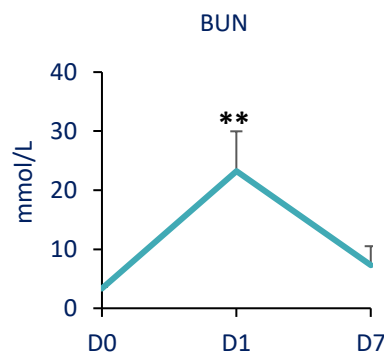
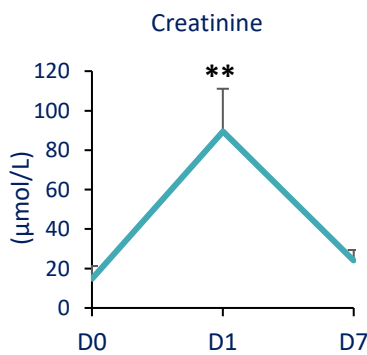
Assay features

- Surgical model on C57BL6/J male mice
- Gene expression and histological analysis
- Reference: Pirfenidone 300mg/kg
- Suitable for drug screening: 7d to 28d

Study design



Assay readouts



➡ Tubular casts