

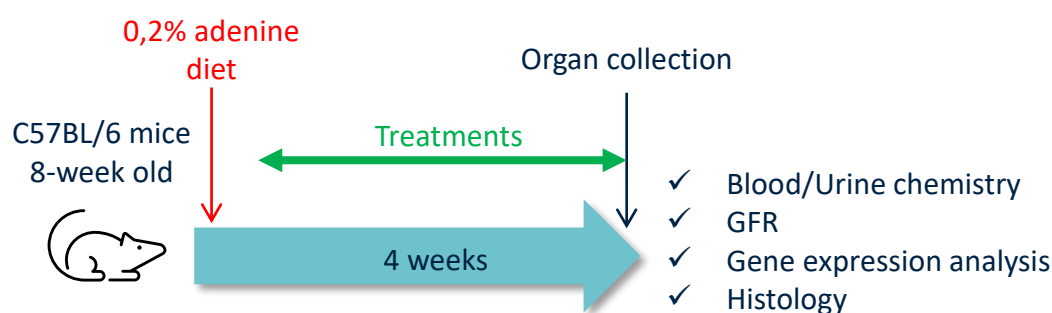
# Adenine-diet model of fibrosis

The Adenine Diet model is a well-established preclinical model used to induce chronic kidney disease through progressive tubular injury, interstitial inflammation, and fibrosis. The adenine diet mouse model developed by NEPHRIX Biosolutions enables the evaluation of anti-fibrotic and/or anti-inflammatory drug candidates on CKD progression and associated renal dysfunction.

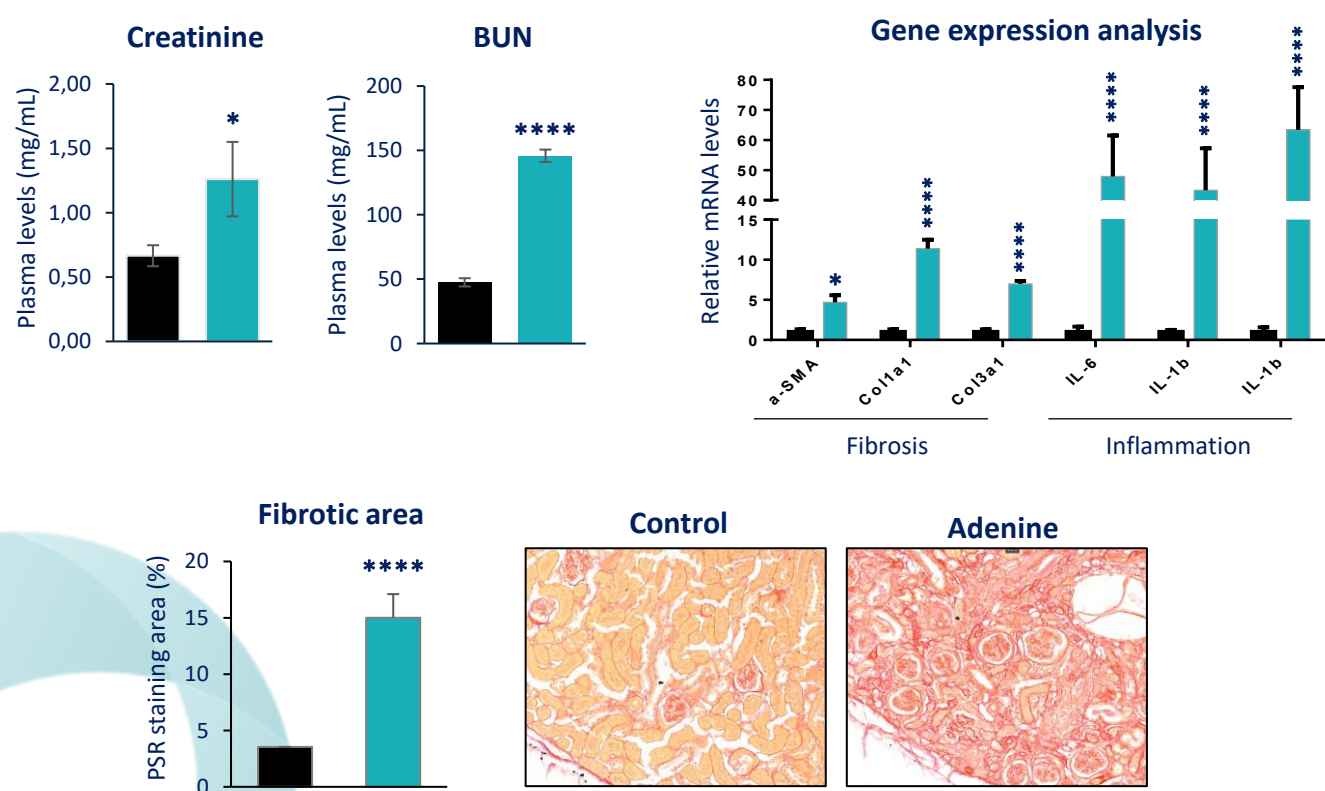
### Model features

- Mouse C57BL/6/J mice or Sprague Dawley rats
- Gene expression and histological analysis
- Plasma/Urine parameters for longitudinal monitoring

## Study design



## Assay readouts



Kidney fibrosis staining by Picrosirius Red